

# EDM-MD Control Box

## EDM-MD Control Box



No:	Description
1.	Power Input Plug in 200~240V AC
2.	RUN / PRG Switch Slide switch to change from RUN mode to PROGRAM mode
3.	TEST / UP & SET Buttons
4.	LED Display LED Display is a visual display for the installer in order to correctly set up and operate MICOM EDM MD Operator. LED Display: LED1 : Function / Application, LED2 : Parameter Value Green LED : Power indicator Red LED : Sensor indicator (SS or SB)
5.	SW4
6.	Motor Plug Connection of Motor to Control by Plug in
7.	Sensor Harness Connection of Sensor Harness to Control by Plug in
8.	E-Lock Relay Output (NO or NC) (DC 24V 300mA)
9.	DC 24V Output for E-Lock (can be used for sensors, as well.) (DC 24V 300mA)

## Delivery

MICOM EDM-MD Series - Supplied in formats as follows:

- EDM-MD 'COMPLETE OPERATOR' consisting of: Base Rail, Cover, Control Box, Connection Harness, Motor Gear Box, Connection Terminal, End Covers, Tooth Belt, Belt Bracket Link Assembly, Belt Connection Single & Double Door, Belt Tightening / Idle Pulley Assembly, Hanger Roller Brackets x4 and Stopper x 2.
- COMLETE OPERATOR - Standard Rail Length: Single Leaf - 2100mm, Double leaf - 4200mm
- RAIL & COVER - (Material Only) - Standard Length: Single Leaf - 2100mm, Double leaf - 4200mm



AUTOMATIC DOOR ON GLASS



AUTOMATIC DOOR FRAMELESS



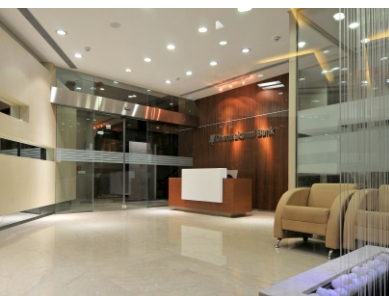
AUTOMATIC DOOR CONCEAL IN CEILING



AUTOMATIC DOOR WITH SS MANET FITTING



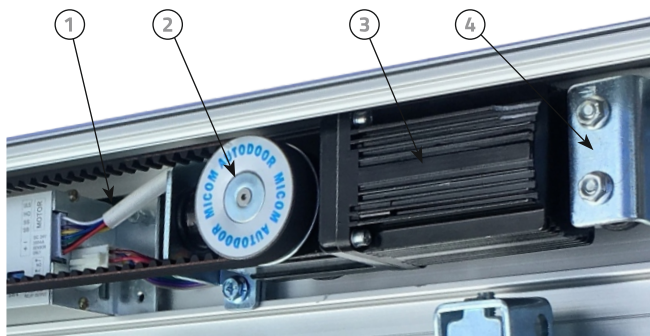
AUTOMATIC DOOR FOR RETAIL SHOPS



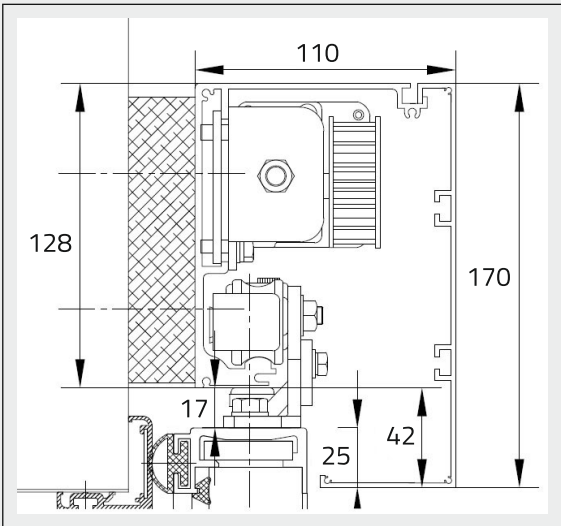
AUTOMATIC DOOR FOR Building Lobby

AUTOMATIC DOOR BEST SUITED FOR  
1:- CORPORATE HOUSE  
2:- RETAILS OUTLETS  
3:- SUPER MARKET & HYPERMARKET  
4:- BANKS  
5:- HOSPITALS  
6:- BUILDING ENTRANCE LOBBY  
7:- AIRPORTS

# EDM-MD-S Motor Gear Box



No:	Description
1.	Connection Harness to EDM MD Control Box
2.	Motor Pulley
3.	Brushless DC Motor
4.	Motor Mount Base with Vibration Proof Rubber



Dimensions in Millimeters (mm)

**NHN**<sup>®</sup>  
DOOR OPENING SOLUTIONS

**MICOM**  
**AUTODOOR**

[www.nhntyroindia.com](http://www.nhntyroindia.com)

**UK / European Office**  
The Grainger Suite // Regent Centre // Gosforth  
Newcastle upon Tyne // NE3 3PF // United Kingdom

**Head Office - Japan**  
6th Floor // Marutake-Honmachi Building 6-18  
Honmachi 1-Chome Chuo-ku // Osaka 541-0053 // Japan

**India :-**  
Office No 5 New Ambika Apartment Road No2  
Jawahar Nagar Goregaon West Mumbai 400062 // India  
Tel :- +91-22-60029000  
email :- [info@tyroindia.com](mailto:info@tyroindia.com) & [info2@tyroindia.com](mailto:info2@tyroindia.com)

**100% Japanese Quality and Engineering**  
MICOM & NHN are registered trademakrs and divisions of Kenwa Company Limited, Osaka, Japan

**KENWA**  
Open to new possibilities

# EDM MD-S

Automatic sliding door operator  
Exceptional quality, economical prices

**CE** EN16005 Compliant

**NHN**<sup>®</sup>  
DOOR OPENING SOLUTIONS

**AUTODOOR**  
[www.nhntyroindia.com](http://www.nhntyroindia.com)





# Introduction

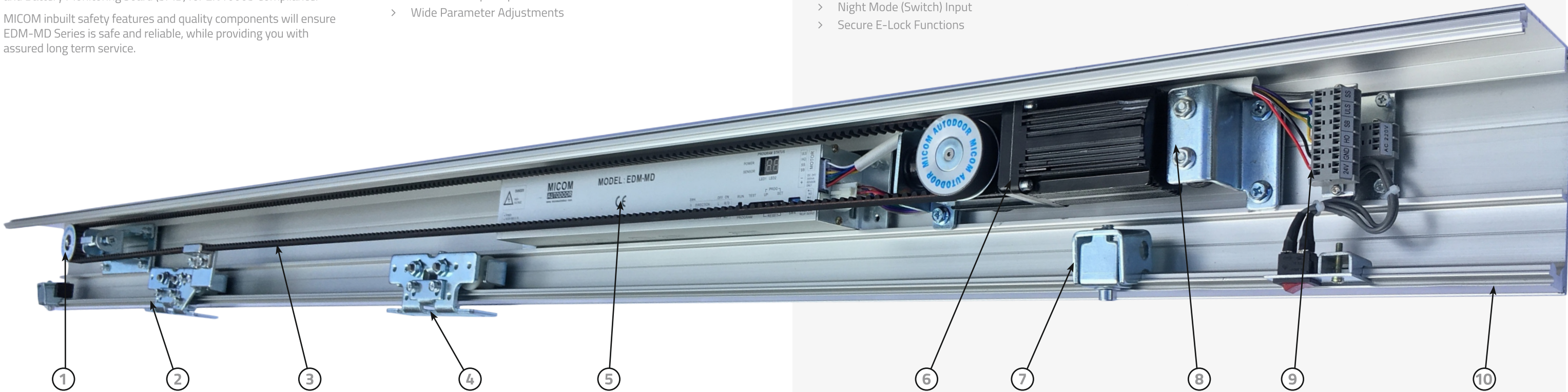
## Introduction

**EDM-MD Series** is designed to provide a high quality, economical automatic sliding door solution for easy open and close operation. Offering variable function adjustment for single or double door leaves up to 100kg per leaf. Installation and set up is simple and achieved in several steps. Door stroke is memorized by simply pushing the RESET button one-time during initial installation or for servicing requirements. There is no need for the operator to re-learn each time the main power is turned on.

Automatic operation is upon sensor or switch activation with safety beam threshold safety input active when the doors are in operation. Together with many other functions available, operational parameters can be adjusted to suit each individual installation through the easily accessible LED visual display found on EDM-MD Control box face.

Connections for sensor and other inputs are located as either an independent input terminal on the rail or by adding MICOM Sensor and Battery Monitoring board (SMB) for EN16005 Compliance.

MICOM inbuilt safety features and quality components will ensure EDM-MD Series is safe and reliable, while providing you with assured long term service.



## EDM-MD Complete Operator

No:	Description
1.	Belt Tightening / Idle Pulley Bracket Assembly
2.	Hanger Roller Bracket with Belt Bracket Link Assembly (Single Leaf)
3.	Tooth Belt
4.	Hanger Roller Brackets (Double Roller as standard)
5.	EDM MD Control Box
6.	EDM MD Motor Gear Box Assembly
7.	Door Stop
8.	Motor Mount Bracket with Vibration Proof Rubber
9.	Connection Terminal with Power On Off Switch
10.	Base Rail with Cover and Side Cover (Cover not shown)

### Main Features

- > Economical & Cost Effective Sliding Door Solution
- > Power input 200-240VAC
- > Door Capacity 100kg per leaf
- > Door Speed 500mm/s max
- > Memorized one time door stroke
- > Easily accessible sensor and threshold safety Inputs
- > 24V DC Power Output for Accessories
- > Safe & Long Term Operation Guaranteed
- > LED Digital Control Display
- > Simple Door Parameter Setting
- > Door Speed & Braking Adjustment
- > Energy Saving (% Open) Function
- > Delay Function for Electric Lock
- > Ratchet or Flip-Flop Function
- > Wide Parameter Adjustments



**EDM-MD** together with **MICOM SMB** when used as a complete operator, complies with all new EU regulations (EN16005) for enhanced automatic door safety. Designed for use with a new range of sensors such as BEA IXIO-S & Optex OA-Axis-T.

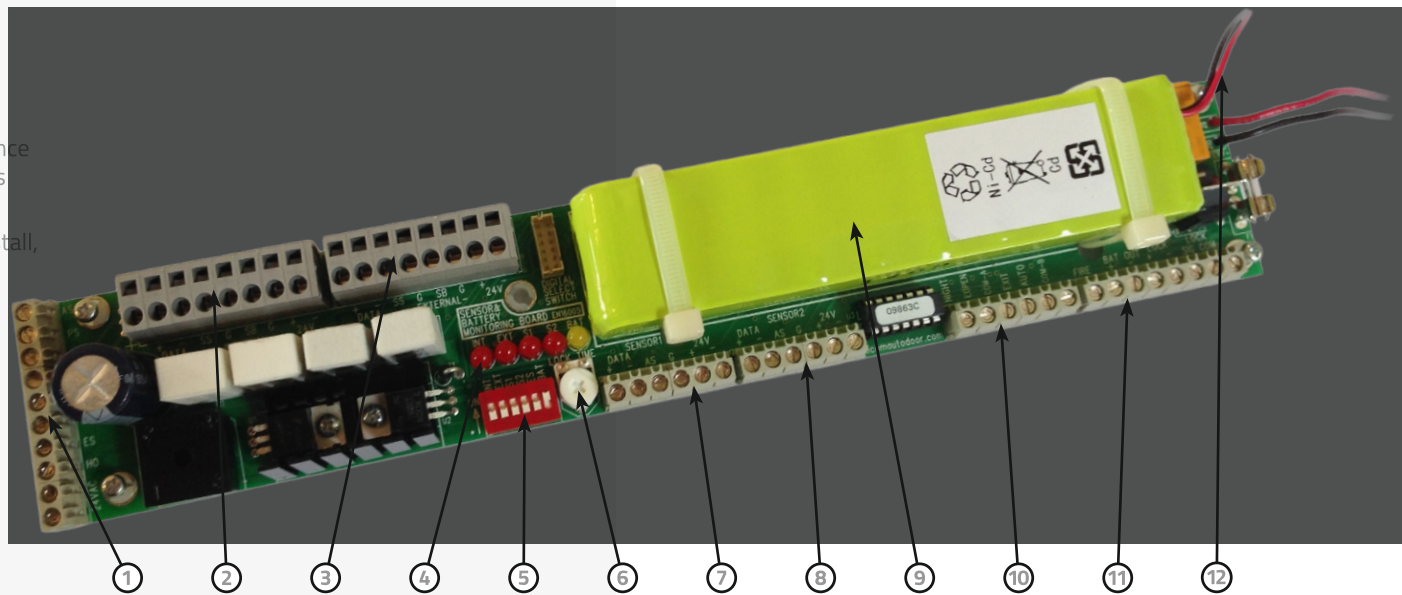
### MW-Series- Microwave Motion Sensor

**OA-AXIS-T Series** based on active infrared technology. Developed as a combination sensor for threshold safety and activation, the OA-Axis T is in compliance with the latest European and local regulations as EN 16005 and DIN 18650, tested and approved by the German test organisation TÜV. Due to its variety in output options the OA-Axis series meets the requirements in various markets throughout Europe.



**EDM-MD** when used without SMB can also accept all current sensors available in the world market today, such as BEA Eagle & Optex OA-203C together with threshold safety beam protection.

**EAGLE Series** is a microwave sensor which detects movement. Utilising a planar antenna together with multi directional detection modes, the EAGLE offers high levels of stability and reliability. It is the solution for all types of automatic doors, irrespective of the surroundings utilizing K-band microwave technology.



No:	Description
1.	SMB output to Control Box
2.	Internal Sensor Input
3.	External Sensor Input
4.	LED Error Indicator
5.	DIP Switch
6.	E-Lock Timer
7.	Side Screen Sensor Input 1
8.	Side Screen Sensor Input 2
9.	Battery Pack
10.	Selector Switch Input (4 wire)
11.	E-Lock & Battery Output
12.	Battery Connection

## EN16005 Compliance

**MICOM SMB is a SENSOR & BATTERY MONITORING SYSTEM** which offers compliance with EN16005 across our range of EDM Series automatic sliding door operators. It is compatible with models EDM NII, GII/EZ & MD Series.

**MICOM SMB** is a modular system for enhanced automatic door safety. Simple to install, whilst offering added protection and multi-functional features which include:

- > Conforming to EN16005
- > Individual Sensor Monitoring & Safety
- > Battery Functions & Monitoring
- > Key Function Selector Switch (Locked / Exit / Automatic / Hold Open, plus Emergency - Anti Panic Open)
- > Individual Sensor Inputs & Wiring
- > LED Indicator (Mode & Error)
- > Emergency Open Input
- > 24VAC Power Input (Isolated Transformer)
- > Night Mode (Switch) Input
- > Secure E-Lock Functions



# Accessories

## Accessories

**MICOM Function Selector Switches** offer several options of door control. As either a rotary knob or with a secure key, allows selection of 4 to 5 separate door modes. Economic in design, MICOM Function Selector are easy to install and operate. Supplied in a fire retardant black plastic mount box, with attractive cover design in white, our function selectors can be fitted to walls or aluminium frames alike.

### Section Functions:

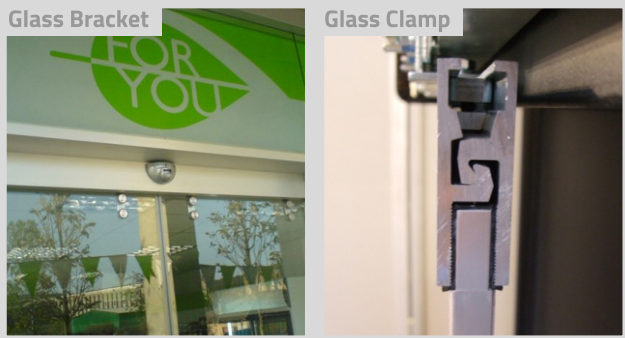
- > Position 1. Closed / Night
- > Position 2. Exit Only (Entry Only available as additional option)
- > Position 3. Automatic
- > Position 4. Hold Open

With Push Button (option) for Exit in case night function is selected. Finished complete with 3m Cable.



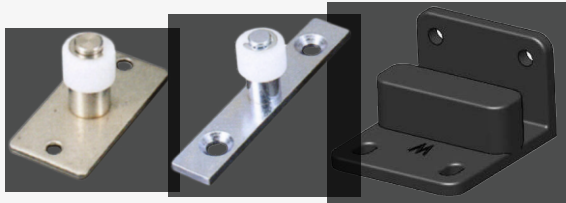
**Door Profile Solutions** - Various Fixed and Moving profile designs available without glass.

### Glass Fittings



**Glass Bracket** - For 10mm glass door 90kg max / 1.2m width max & 12mm glass door 120kg max / 1.5m width max

**Glass Clamp** - For 10mm glass door 100kg max / 1.5m width max



**Floor Guide** - Floor guides for framed and frameless glass doors available.